

VILLAGE OF
Wrightstown
EST. 1901

It's Just Right!

Contact information

352 High Street
Wrightstown, WI 54180

Village Board

President

Dean Erickson 920-532-0788

Trustees

Sue Byers 920-912-5139
Mark Leonard 920-707-3225
Andy Lundt 920-217-4034
Terry Schaeuble 920-764-0006
Dan Segerstrom 920-660-0294
Julie Sigmund 920-435-7262

Public Works & Utilities, 101 Washington Street

Director 920-532-0434 Ext-42
Andy Vickman avickman@wrightstown.us

Police Department, 352 High Street

Chief 920-532-6007
Greg Deike gdeike@wrightstown.us

Fire Department, 961 Broadway Street

Chief 920-532-4556
Mike Schampers mschampers@wrightstown.us

Village Hall, 352 High Street

Administrator 920-532-5567, Ext-13
Travis Coenen tcoenen@wrightstown.us

Clerk/Treasurer 920-532-5567, Ext-10
Shelia Bowers sbowers@wrightstown.us

Municipal Judge 920-532-5547, Ext-31
Evan Mathu judge@wrightstown.us

Court Clerk 920-532-5547, Ext-30
Neil Basten court@wrightstown.us

SPRING PRIMARY (if necessary):
Tuesday, February 20, 2024

SPRING ELECTION
SPRING ELECTION PRESIDENTIAL PREFERENCE VOTE
Tuesday April 02, 2024

ON THE BALLOT:

Village Trustees (3)— Two Year Terms
Municipal Judge (1) - Four Year Terms
Wrightstown School Board Members (2)— Three Year Terms

Election Day Voting Hours 7:00am to 8:00pm



Zirbel Sledding Hill

The Zirbel Sledding Hill will be available for use this coming winter at first snowfall. Sledding hours are from dawn to dusk, and is at your own risk. The Zirbel Sledding Hill is located at 352 High Street. Parking is available in the rear parking lot at Village Hall.

We would like to remind all users of the sledding hill to stay within the designated use areas and to place any garbage in the containers provided. If you notice any vandalism to areas of the sledding hill, please notify the Wrightstown Police Department or the Department of Public Works.



NOTE:

When walking your dog (s), please remember to carry a bag with you to pick up their "doggy do-do". Everyone will appreciate your cooperation and the respect for their property.



2024 Dog Licenses — Now Available

Per Wisconsin State Statutes, owners of all dogs more than five (5) months of age are required to annually pay a dog license tax and obtain a license.

Owners may: (1) stop in at Village Hall with their veterinary information relevant to rabies vaccinations and the appropriate fees, (2) mail the information and fees to Village of Wrightstown, 352 High Street, Wrightstown, WI 54180, or (3) place an envelope in the drop box by the Village Hall front door with the documents and fees. Spayed or neutered - \$5.25 for each dog. Non-spayed or non-neutered - \$10.25 for each dog. Checks should be made payable to the Village of Wrightstown. We will process your dog license and mail your dog tag(s), receipt and documents back to you.

The deadline for renewing a dog license is **before April 1st** of each year per Wisconsin State Statutes. A penalty will be assessed against the owner of such dogs in the amount of \$25.00 for each eligible dog not licensed as of April 1st of each year, plus the original license fee.



2024 5th Annual Winter Movie

Village of Wrightstown
352 High Street
Saturday
Feb. 11th @ 1:00pm

Free Popcorn and Water

*Kiddos bring your blankets
or use our chairs and snuggle
in for a great movie.*



DEPARTMENT OF PUBLIC WORKS & UTILITIES

THE SCOOP FROM DPW

Winter & Snow Guidelines

The winter season is here. As the snow falls, there are a few guidelines to keep in mind that will make the season safe for everybody. We would like to remind you:

- For pedestrian safety all sidewalks are to be cleared of snow and ice by the property owner within 24 hours after a snowfall.
 - Shoveling, blowing, or plowing your snow into the street makes it unsafe for automobile traffic in the village. It also violates Village ordinance and adds to the expense (your cost) of snow removal operations.
 - If you see a Village or County snow plow in your area, please yield to them. The snowplow operators are constantly maneuvering back and forth to clear the snow, and as a result, may not see you. Please give them the room they need to safely and efficiently clean the road. In addition, please do not park vehicles on the road after a snowfall. Plowing around a parked vehicle requires the operator to come back at a later time, which is not an efficient use of taxpayer dollars. Your cooperation is greatly appreciated.
 - If your mailbox is damaged from snow removal operations, please see the Village website for our mailbox replacement/repair policy.
- *Important Reminder - the front of the mailbox cannot extend past the back of the curb.*
- Winter Street Parking—Per Ord. 185-2, no vehicle shall be parked on the Village streets between 2am—6am from November 1—March 31.
 - Please keep your garbage and recycling carts out of the street/curb lines to ensure safety and allow crews to efficiently plow/de-ice roadways. Carts should be placed in the driveway apron or a cleared area on the curb. Carts should never be placed in the street or on a snow bank.

<https://wrightstown.us/public-works-utilities/street-operations/>

Brush & Compost Facility Relocation

The Village of Wrightstown's Brush & Compost Facility has been relocated to **886 Mallard Rd.** (previously located at Van Dyke St.). The new facilities' operations and guidelines will remain the same as current. Thank you all for your cooperation during this transition. We look forward to continuing this service to village residents. Below you will find the current information and guidelines.

- Open seven days a week from dawn to dusk.
- Site is for Village of Wrightstown residents only.
- Contractor use of any kind is prohibited.
- Please place products in proper assigned bins or designated areas.
- Acceptable item to drop off: grass and lawn clippings, leaves, garden waste, small brush (max diameter 4"), branches and shrub clippings, Christmas trees (seasonal).
- Unacceptable items to drop off: solid waste (garbage), recyclables, plastic or paper bags, TV's and electronics, tires, large logs or stumps, branches larger than 4" diameter, sand and soil, gravel, rocks or concrete and animal waste or carcasses. If you are not sure if an item is acceptable or not, please call the Department of Public Works at 920-532-0434. We have options for properly disposing of many of these items.
- Facility is under surveillance.

Acceptable Items	Unacceptable Items
<ul style="list-style-type: none"> • Grass and lawn clippings • Leaves • Flowers or plants • Garden waste (including pumpkins, fruit and vegetables) • Weeds • Small brush, branches and shrub clippings • Christmas trees (seasonal) 	<ul style="list-style-type: none"> • Solid Waste (garbage) • Recyclables • Plastic or paper bags (even if they say compostable) • TVs and electronics • Tires • Large logs or stumps • Branches larger 4" in diameter • Sand or soil • Gravel, rocks or concrete • Animal waste or carcasses

If you are not sure if an item is acceptable or not, please call the Department of Public Works at 920-532-0434

ADOPT-A-HYDRANT

If you have one of our 263 fire hydrants in your area, please adopt it for the winter by keeping it clear of snow. Please keep it shoveled three feet in all directions as the snow piles up. We certainly don't want a delay because we can't easily get water from a hydrant buried under the snow. By doing so you will help keep your neighborhood safe by providing easy access to the hydrant should the Wrightstown Fire Department need to use it.

Keep Fire Hydrants Clear of Snow

Every second counts in an emergency

- Remove snow and ice from the hydrant
- Clear an area approximately 3 feet around the hydrant
- Clear a path from the hydrant to the street



HOLIDAY MURALS

Check out the Holiday Murals displayed in the River District by the scenic outlook Christmas tree (near The River Coffee & Country Cabinets). The beautiful murals will be displayed throughout the holiday season! Show your support to these great artist, businesses, organizations and community members by voting for your favorite on the *Village of Wrightstown – Public Works & Utilities* Facebook page.

DEPARTMENT OF PUBLIC WORKS & UTILITIES CONT.

Sump Pump Discharge

Reminder: From November 1st to March 31st, every homeowner who has a sump pump discharge through a curb-cut or hose that discharges directly to the curb & gutter will have to redirect the discharge elsewhere on the homeowner's property. Please be sure you are not discharging to any neighboring property or to an area where discharged water could pool causing icy sidewalks or pedestrian areas.

Winter Water Plumbing:

Tips to Avoid a Costly Winter Plumbing Leak

- Turn off outside water valves to prevent frozen pipes.
- Disconnect all hoses from outside hose bibs to ensure proper drainage and prevent damage caused by water freezing in the devices.
- Protect your plumbing pipes from freezing. When winter temperatures plummet, water can easily freeze inside, causing them to burst. To reduce the possibility of frozen pipes, wrap any uninsulated or piping in unheated areas with pipe insulation.

Lead and Copper

This past August, Wrightstown Waterworks performed mandatory lead and copper tests as per Department of Natural Resources (DNR) guidelines. We collected samples from "Tier II reporting sites," which are homes built from January 1983 to September 1984 with copper pipes and lead-based solder. Our water system is categorized as low risk for lead, with no "Tier I" high-risk lead service lines or components.

During testing, two out of ten samples exceeded the Environmental Protection Agency (EPA) and DNR threshold of 15 ug/L for lead content, which classifies as an "exceedance." We acted swiftly, conducting thorough follow-up tests from the inside plumbing to the external connection. These tests pinpointed the lead sources to interior plumbing. The management is actively engaging with the affected households to eliminate the internal lead threats posed by solder, fixtures, and pipes.

Rest assured, Wrightstown Waterworks, alongside the EPA and DNR, is committed to delivering safe, high-quality water. We believe in transparency and will report this exceedance in future disclosures. Your safety is our priority, and this is an exceptional case. Should any widespread measures become necessary, we promise clear and immediate communication.

If you have any further questions or concerns, please contact Andy Vickman, Director of Public Works and Utilities, at 920-532-0434 or avickman@wrightstown.us, or you can contact Wrightstown's DNR representative, Wendy Anderson.

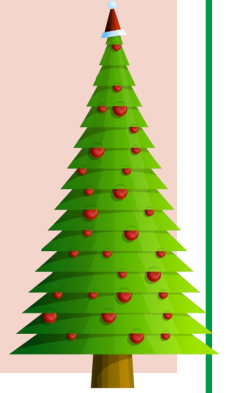
From all of us in Public Works and Utilities, We wish you a safe and joyous holiday season!

Christmas Tree Curbside Pickup

Christmas trees will be picked up at the curbside on the following Thursdays:

Dec 28th, Jan 4th, Jan 11th & Jan 18th

Please be sure trees are free of any wires, decorations, stands and bags. Any trees containing these items will not be picked up.



Fire Department

With the cold winter setting in, a quick reminder to keep your furnace vents and clothes dryer vents free of snow and ice buildup during the winter. Also make sure your clothes dryer vent is free from lint build up, all the way from the dryer to the exit outside. Have you changed batteries in your smoke detector and CO (carbon monoxide) alarms? Have you looked at it's "Born on date" or expiration date? Replace any alarm that's hard wired or has a non-replaceable battery, smoke detector, or CO that has a date which makes it more than 5-6 years old with a new one. If they are at or near the expiration dates, replace them. If you're using a "real" Christmas tree, make sure to keep it watered while it's on display.

***Have a Merry Christmas &
Happy New Year
from all of us at Wrightstown Fire!***

**Mike Schampers
Wrightstown Fire Chief**



Police Department

According to the National Alliance on Mental Illness (NAMI) the holidays can be joy-filled but they can also be stressful especially for those impacted by mental health. 64% of people with mental illness report holidays make their condition worse. For some, it is not the most wonderful time of the year. The holidays can bring on added stress, anxiety, and/or depression. The Wrightstown Police Department deals with mental health issues year round but it seems to increase around the holidays. NAMI gives a few suggestions on how to reduce stress and maintain good mental health during the holidays. Here is just a few:

- Exercise Daily
- Eat Well
- Get Enough Sleep
- Avoid Alcohol/Drugs
- Spend Time in Nature
- Volunteer
- Find Support – Talk to Someone



If you do find yourself struggling to the point where you feel you are too overwhelmed or even to the point of considering suicide, please reach out in the following ways for help:

- 911 or 920-532-6007 Wrightstown Police Department
- Brown County Crisis Hotline 920-436-8888
- Outagamie County Crisis Hotline 920-832-4646
- Crisis Text Line – Text "HOPELINE" to 741741
- National Suicide Prevention Hotline 800-273-TALK (8255)



352 High Street
Wrightstown, WI 54180
920-532-5567



2024

January

s	m	t	w	t	f	s
	1	2	3	4	5	6
7	8	9	10	11	12	13
14	15	16	17	18	19	20
21	22	23	24	25	26	27
28	29	30	31			

February

s	m	t	w	t	f	s
				1	2	3
4	5	6	7	8	9	10
11	12	13	14	15	16	17
18	19	20	*21	22	23	24
25	26	27	28	29		

March

s	m	t	w	t	f	s
					1	2
3	4	5	6	7	8	9
10	11	12	13	14	15	16
17	18	19	20	21	22	23
24	25	26	27	28	29	30
31						

April

s	m	t	w	t	f	s
	1	2	3	4	5	6
7	8	9	10	11	12	13
14	15	16	17	18	19	20
21	22	23	24	25	26	27
28	29	30				

May

s	m	t	w	t	f	s
		1	2	3	4	
5	6	7	8	9	10	11
12	13	14	15	16	17	18
19	20	21	22	23	24	25
26	27	28	29	30	31	

June

s	m	t	w	t	f	s
						1
2	3	4	5	6	7	8
9	10	11	12	13	14	15
16	17	18	19	20	21	22
23	24	25	26	27	28	29
30						

July

s	m	t	w	t	f	s
	1	2	3	4	5	6
7	8	9	10	11	12	13
14	15	16	17	18	19	20
21	22	23	24	25	26	27
28	29	30	31			

August

s	m	t	w	t	f	s
				1	2	3
4	5	6	7	8	9	10
11	12	13	14	15	16	17
18	19	20	21	22	23	24
25	26	27	28	29	30	31

September

s	m	t	w	t	f	s
1	2	3	4	5	6	7
8	9	10	11	12	13	14
15	16	17	18	19	20	21
22	23	24	25	26	27	28
29	30					

October

s	m	t	w	t	f	s
		1	2	3	4	5
6	7	8	9	10	11	12
13	14	15	16	17	18	19
20	21	22	23	24	25	26
27	28	29	30	31		

November

s	m	t	w	t	f	s
					1	2
3	4	5	6	7	8	9
10	11	12	13	14	15	16
17	18	19	20	21	22	23
24	25	26	27	28	29	30

December

s	m	t	w	t	f	s
	1	2	3	4	5	6
7	8	9	10	11	12	13
14	15	16	17	18	19	20
21	22	23	24	25	26	27
28	29	30	31			

Garbage/Recycling carts must be placed out by 5:00 AM. **DO NOT place carts within 4ft of any object, including other carts.

Yard Waste is **NOT Accepted in carts. Carts with Yard Waste will not receive services until Yard Waste is removed.

Village Board Mtgs

*2/21 Mtg will move to 2/20
if no Spring Primary

Planning Mtgs

Elections

Village Holidays

Utility Bill Due Dates

Recycling Dates